



Wellingborough Council  
Mausolea Proposal



## facilities management

---

May 2007

© Copyright **welters organisation worldwide**  
PO Box 159, Carlisle, Great Britain,  
CA2 5BG

The intellectual property contained within this document is the property of **welters** and is not deemed to be in the public domain

# Area for development



## FULL BODY BURIAL

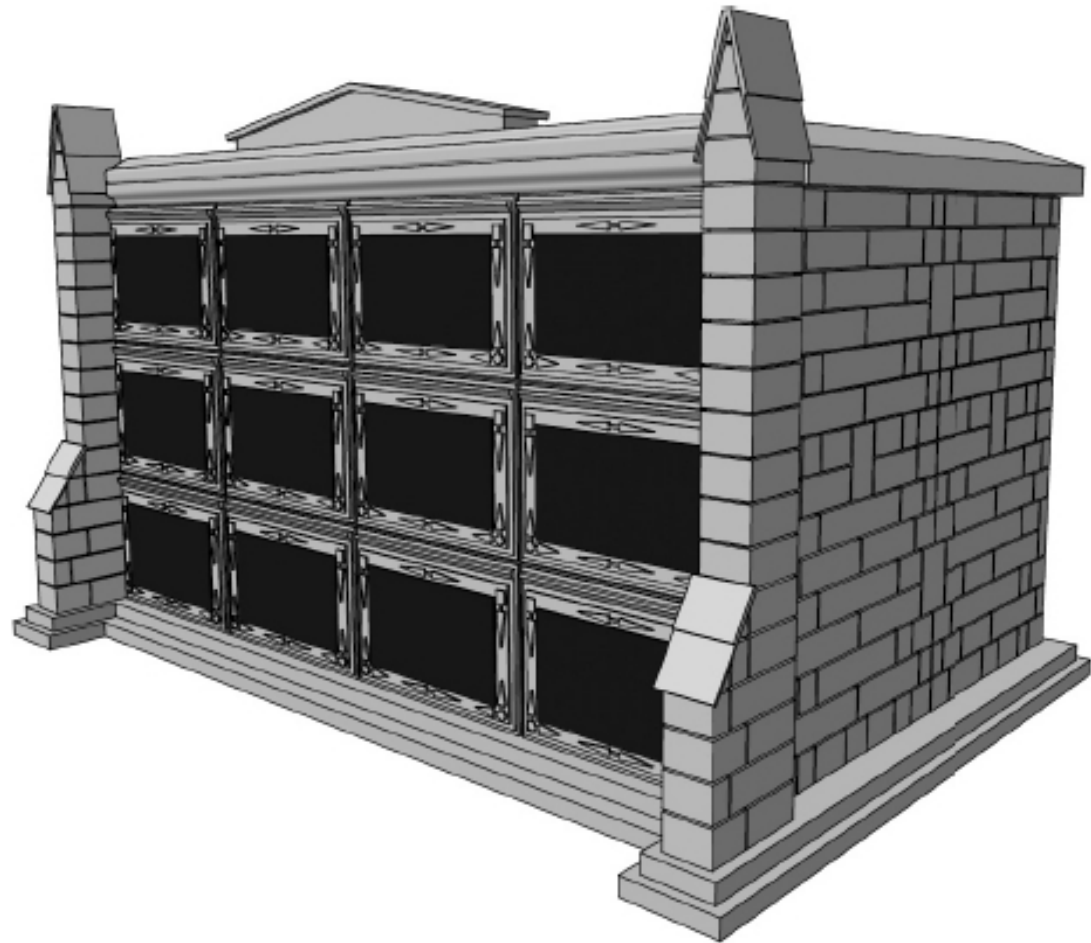
### Decorative Stone Mausoleum

The Decorative Stone Mausoleum is embellished with attractive architectural stone features and can be constructed to suit any interment requirements.

The coffin is inserted into the mausoleum on inbuilt runners allowing simple and effortless interment.

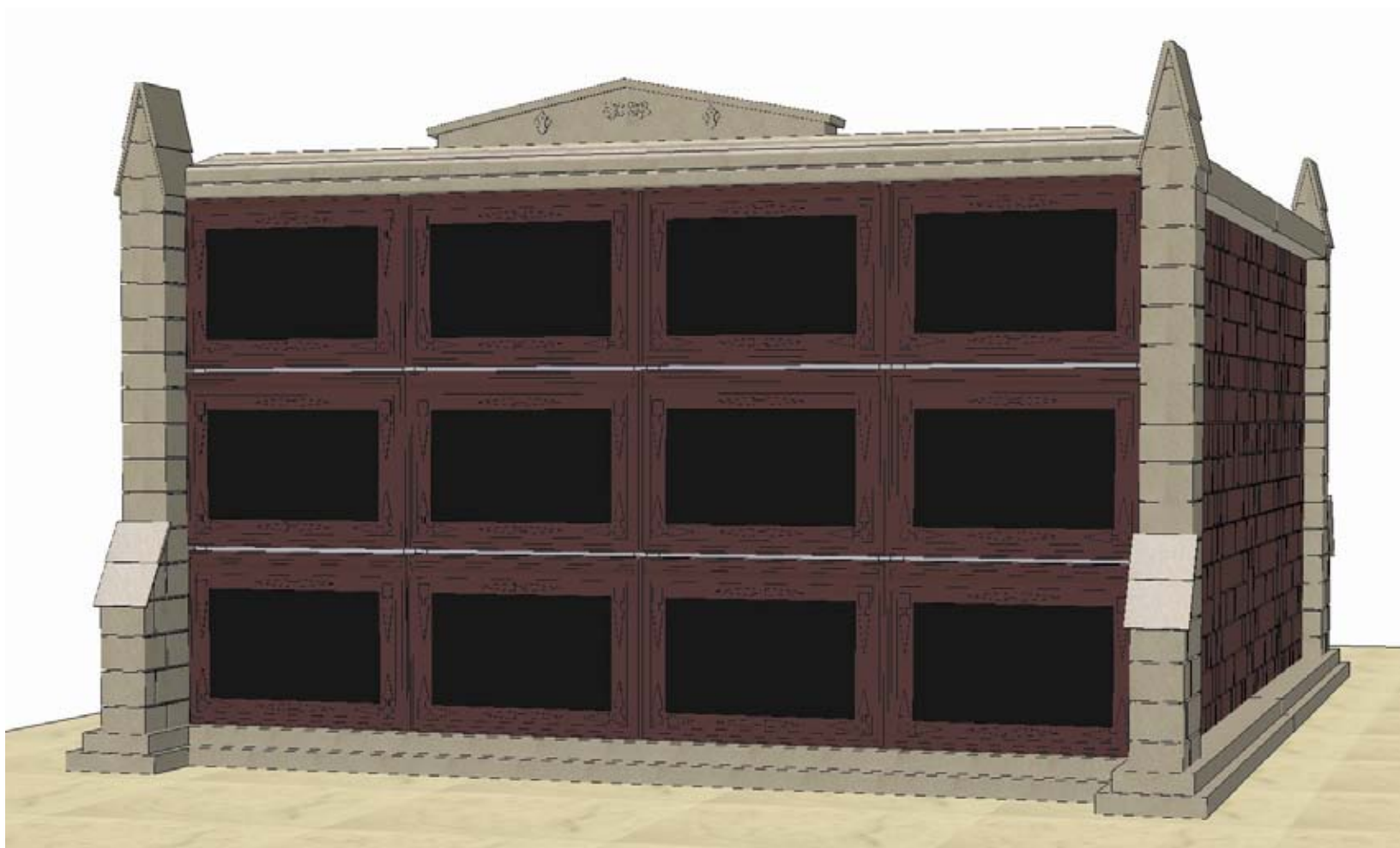
As with all welters memorial systems, the design allows for inclusion of the tablet inscription at the time of interment relieving the need to make future arrangements.

The tablets are set within decorative stone housings.

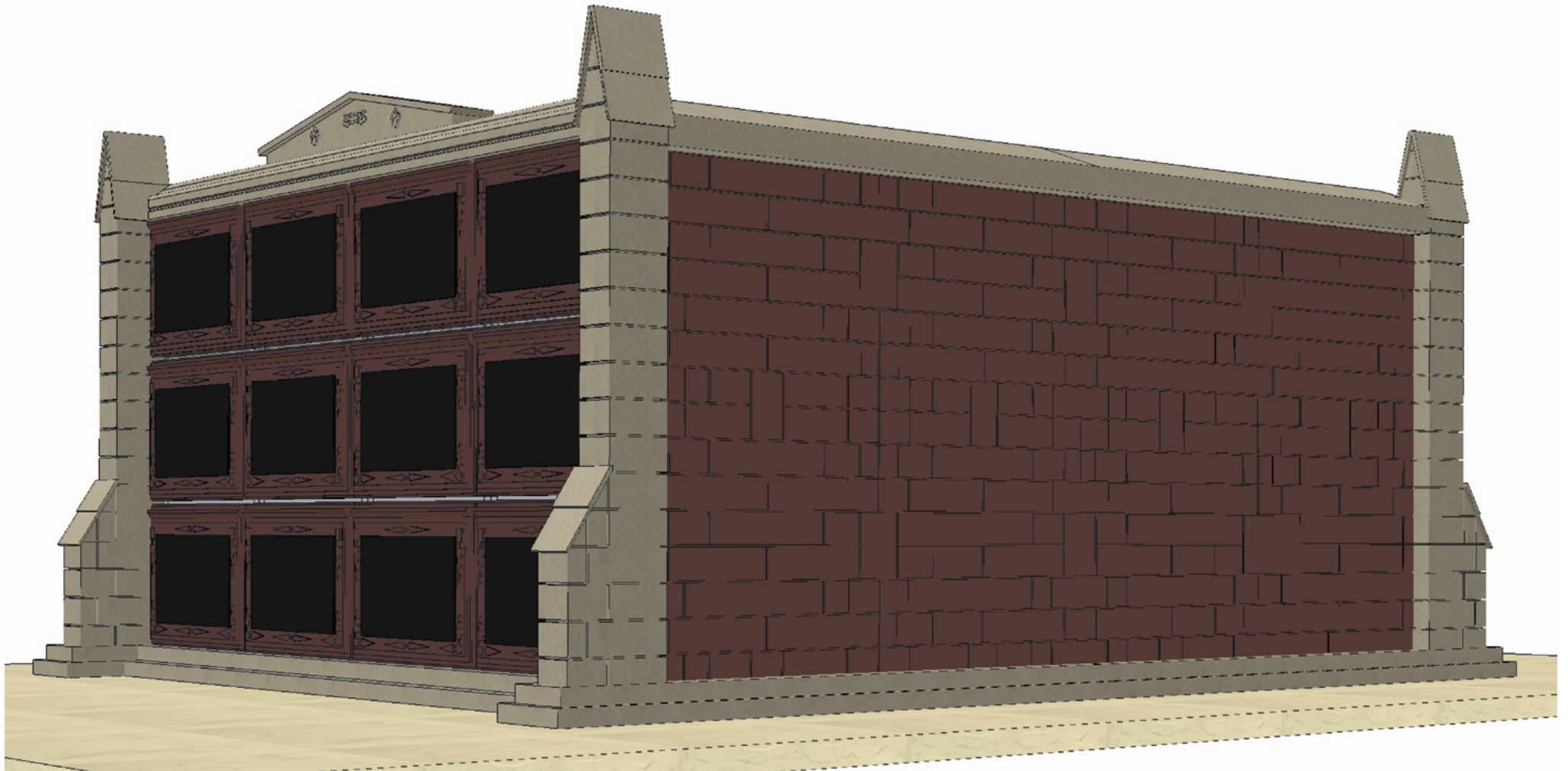


# Proposed Mausolea

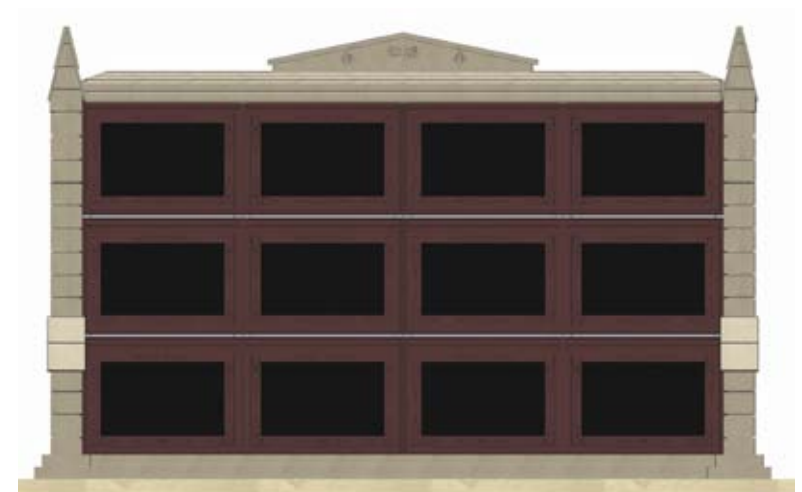
welters propose to produce 2 single Decorative Stone Mausolea positioned back to back giving 24 full body interments. To allow the mausolea to compliment the existing architecture within the cemetery, welters propose to manufacture the mausolea from a selection of buff and red stone and black granite tablets.



# Proposed Mausolea

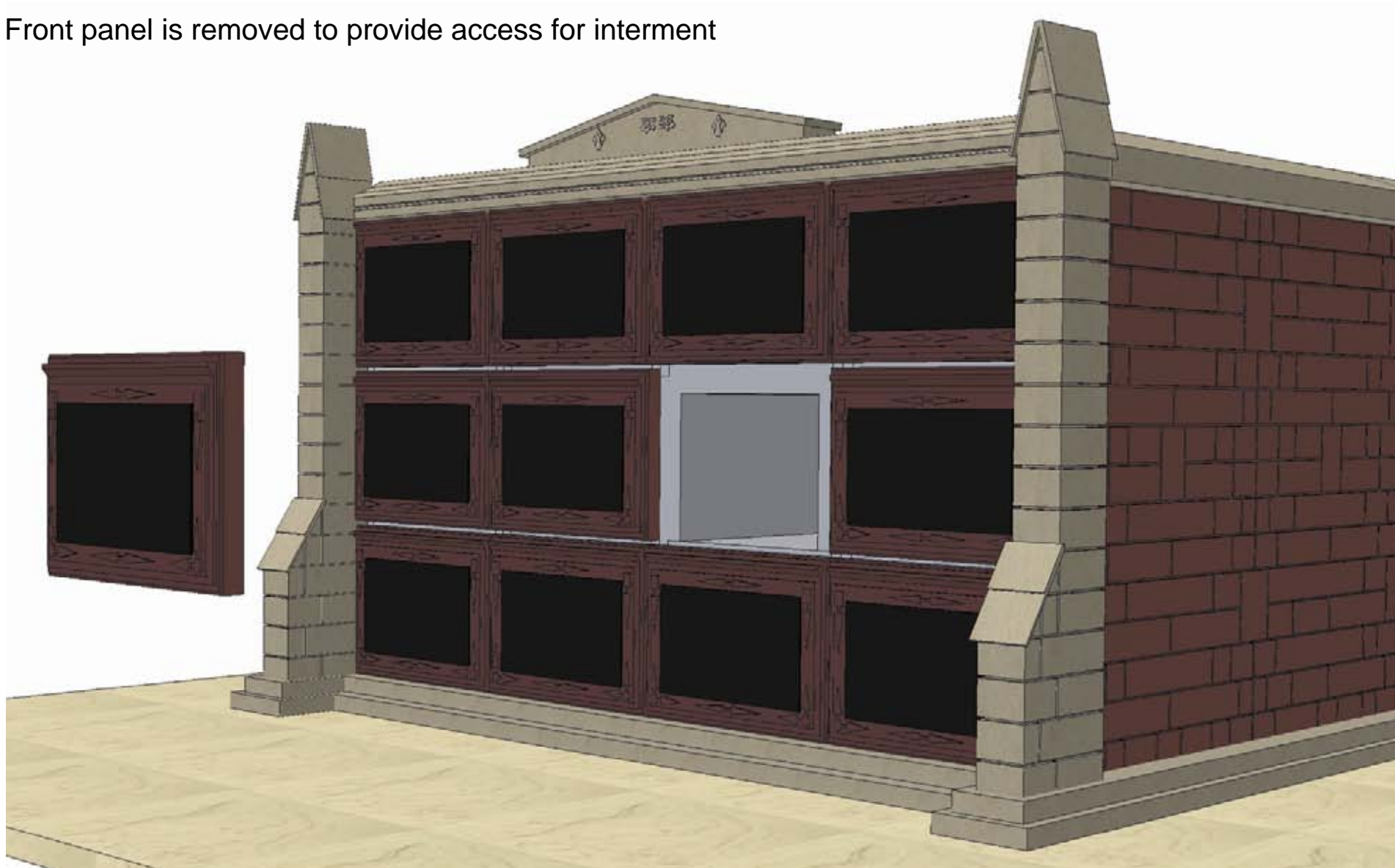


# Proposed Mausolea



# Proposed Mausolea

Front panel is removed to provide access for interment



# Proposed Mausolea

