

INSPIRED TECHNOLOGIES Creative Design & Development



Cremated Remains Memorial Garden

facilities management

April 2009

© Copyright **welters organisation worldwide**
PO Box 159, Carlisle, Great Britain,
CA2 5BG

Design presentation proposal and not contractual document

The intellectual property contained within this document is the property of **welters** and is not deemed to be in the public domain

Typical Views of Proposed Land Aspects

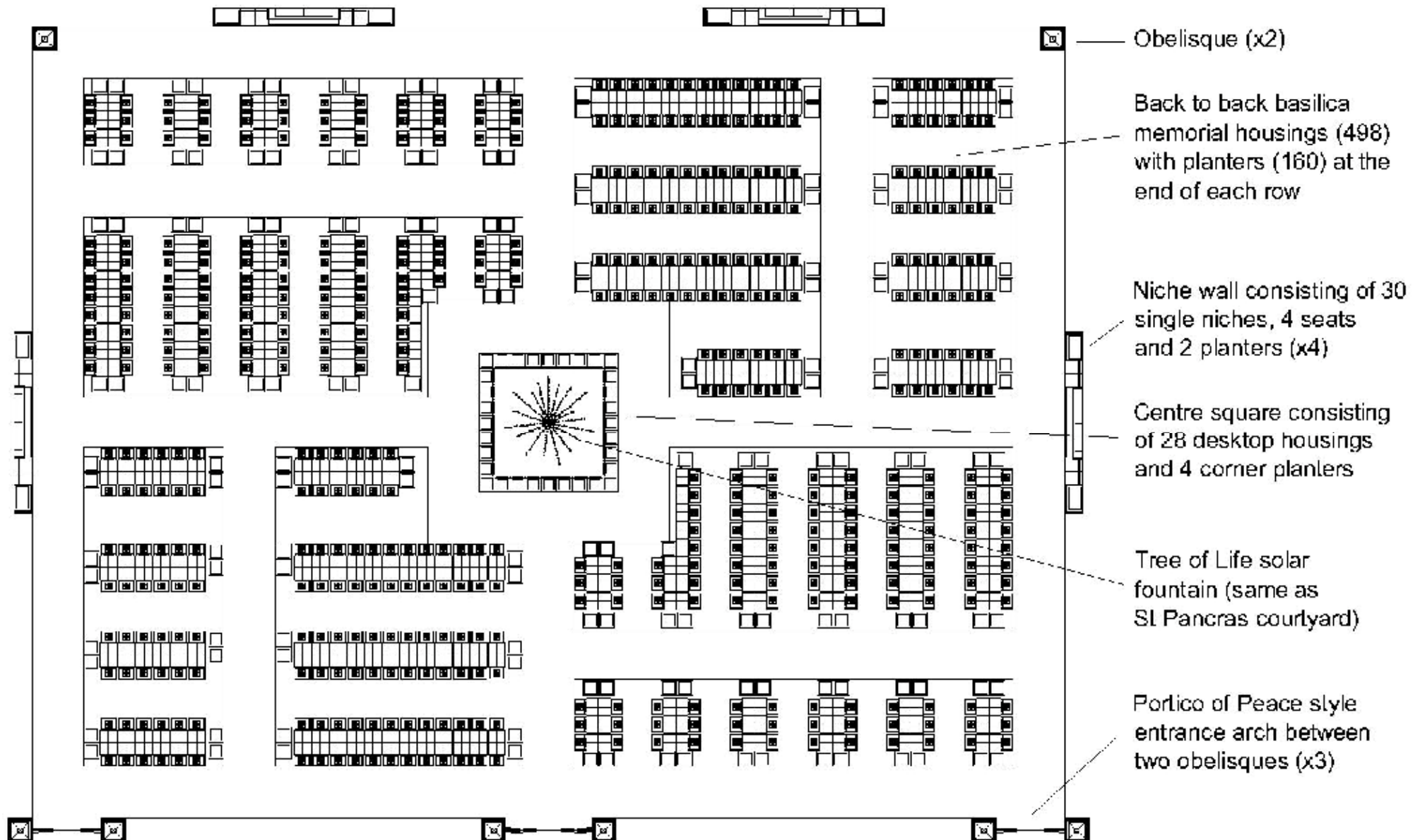


Typical Views of Proposed Land Aspects



Cremated Remains Memorial Garden Site Plan

All cast stone architectural decorative components and paving will be in a buff/sandstone colour.



Cremated Remains Memorial Garden - Virtual Representation

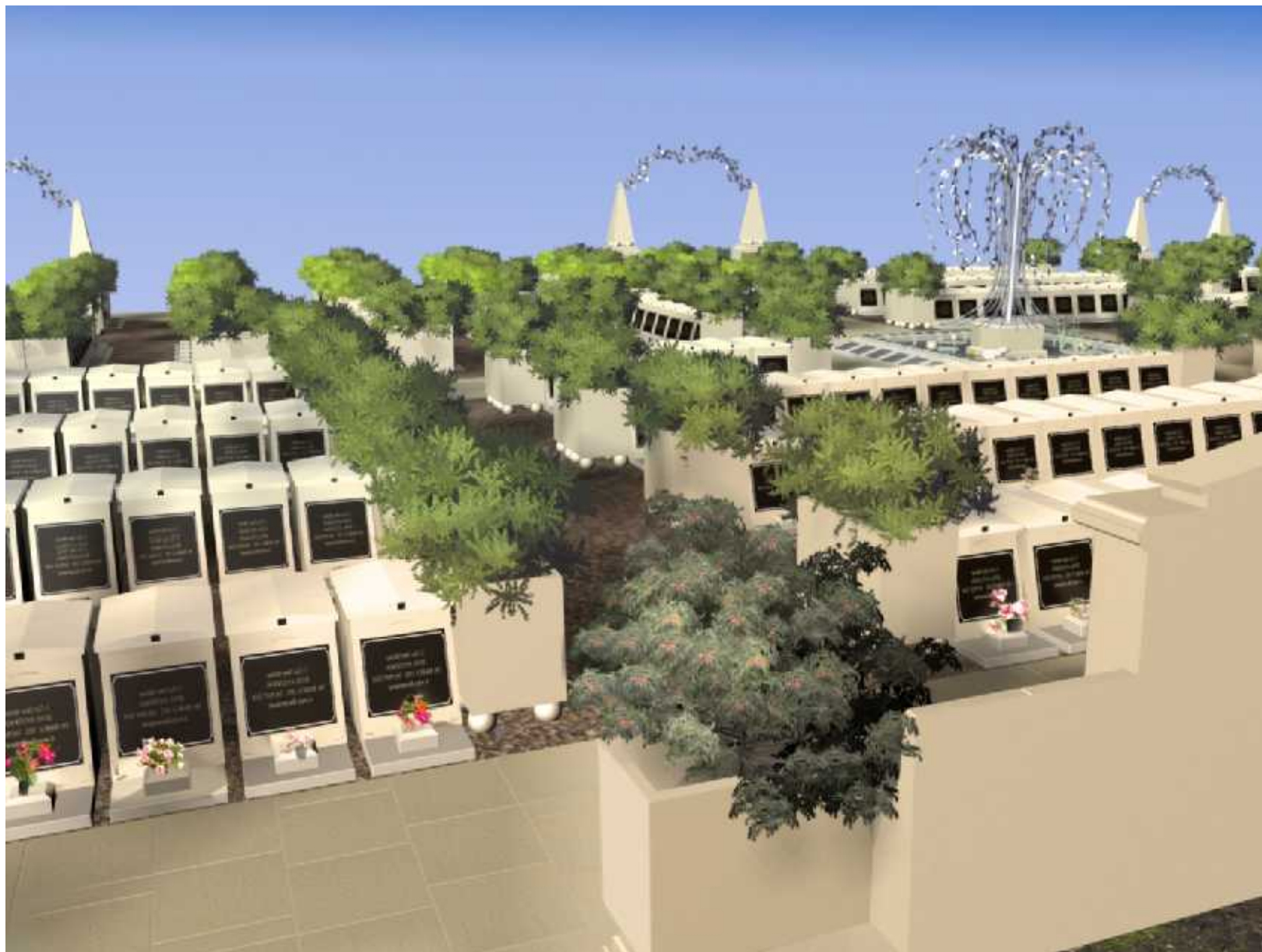
welters
ORGANISATION
WORLDWIDE



The proposal submitted demonstrates the bespoke **welters** Cemetery Village Cremated Remains Memorial Garden as it would appear upon completion of the entire installation.

The scheme has been designed to accommodate a main structure of a wet cast limestone specification with granite tablets to ensure a contemporary and complimentary look and feel in relation to the existing architecture of the chapel building, cemetery and local architecture.

Cremated Remains Memorial Garden - Virtual Representation



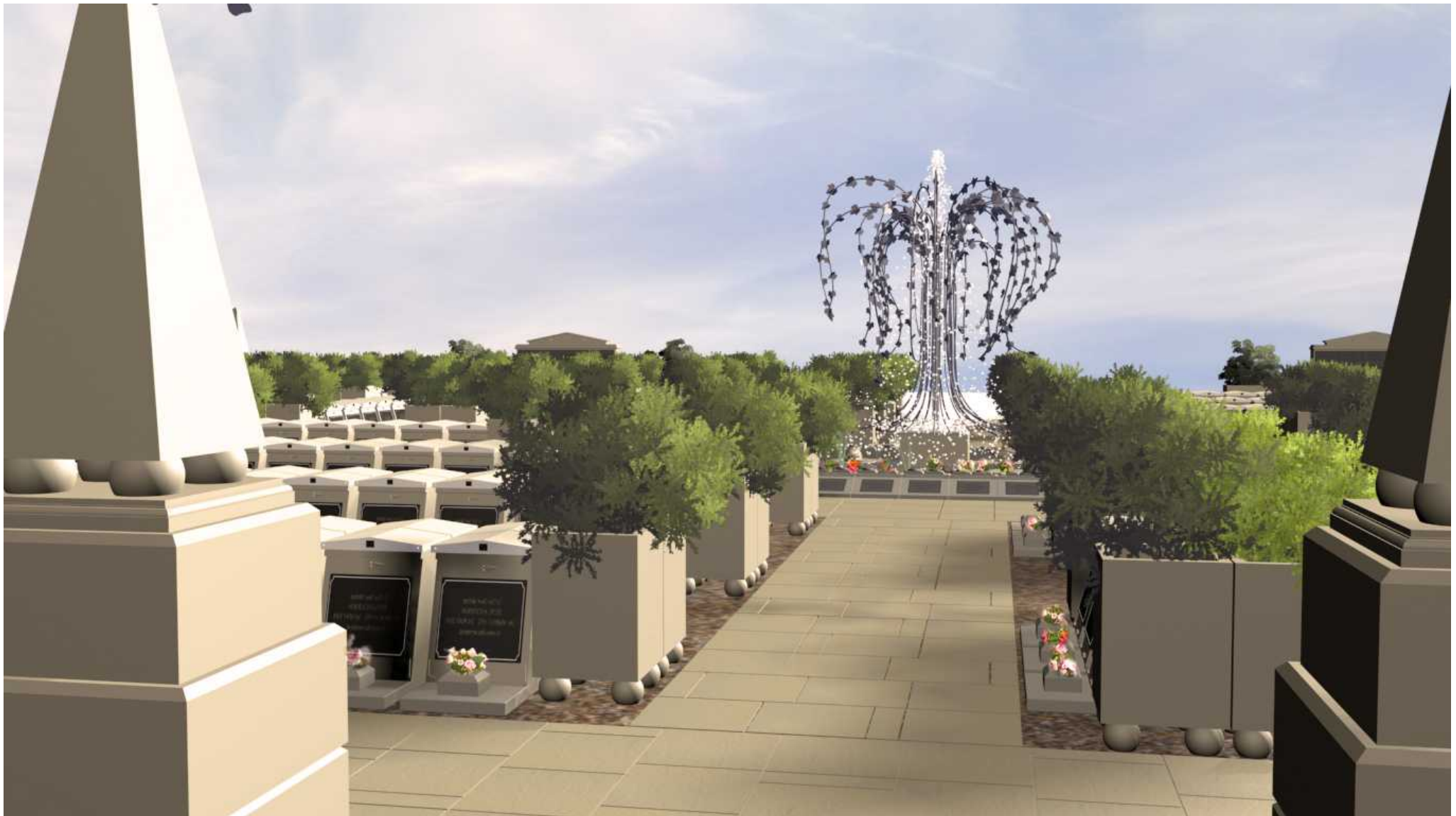
Cremated Remains Memorial Garden - Virtual Representation



Cremated Remains Memorial Garden - Virtual Representation



Cremated Remains Memorial Garden - Virtual Representation



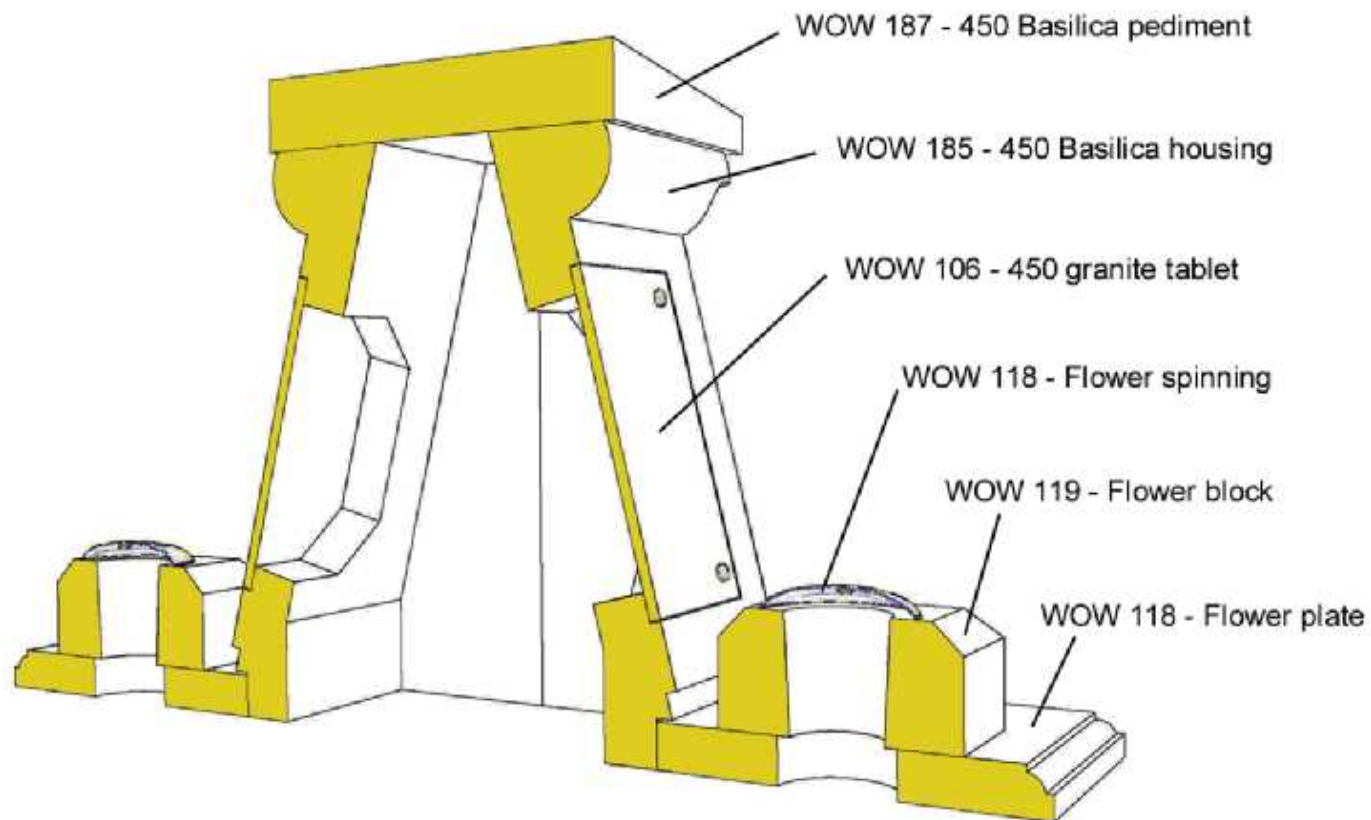
Cremated Remains Memorial Garden - Virtual Representation



Cremated Remains Memorial Garden - Virtual Representation

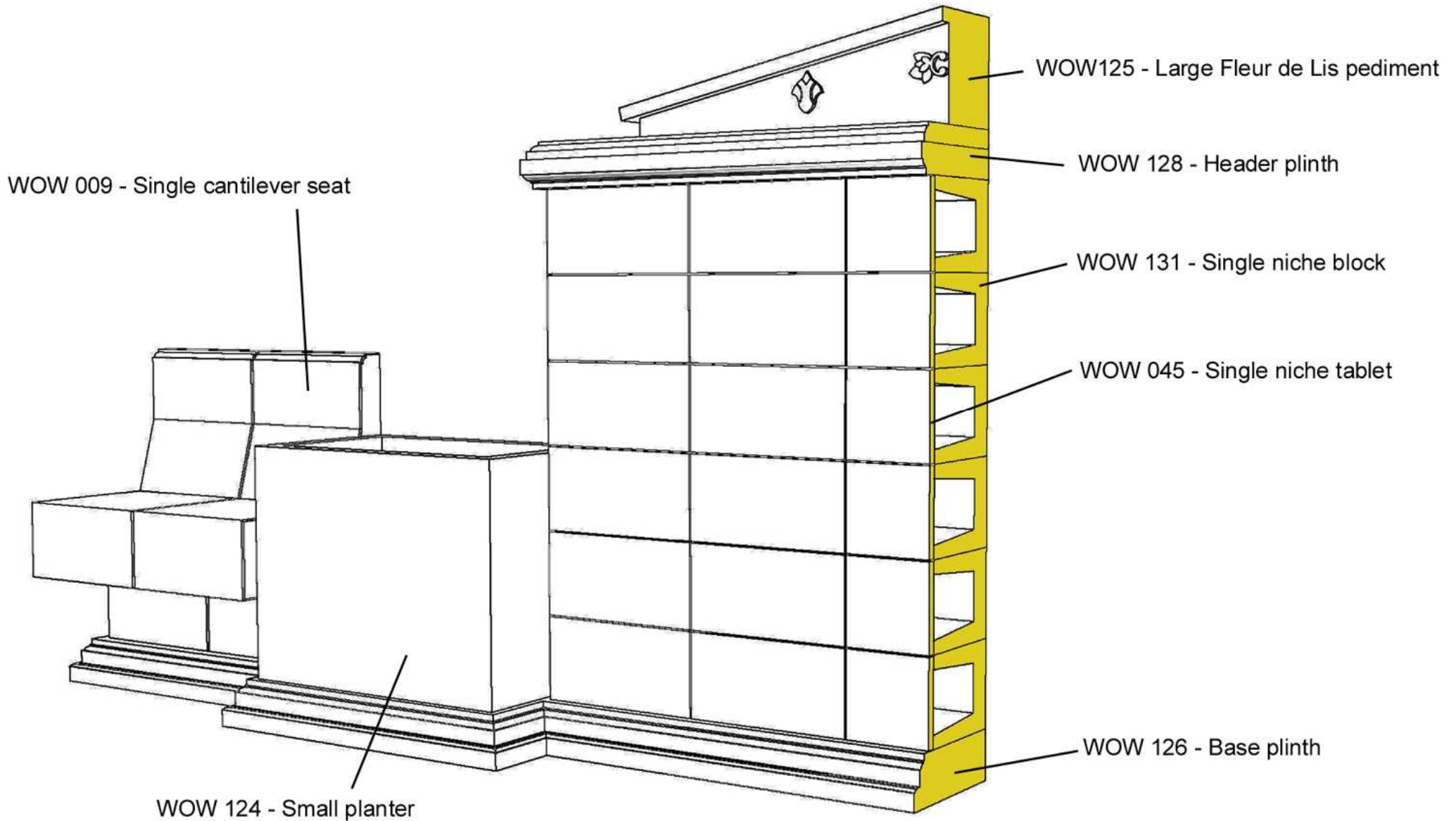


450 Basilica Memorial Housing- back to back configuration



*450 Memorial Housing System
– similar configuration*

Cremated Remains Interment Niche System



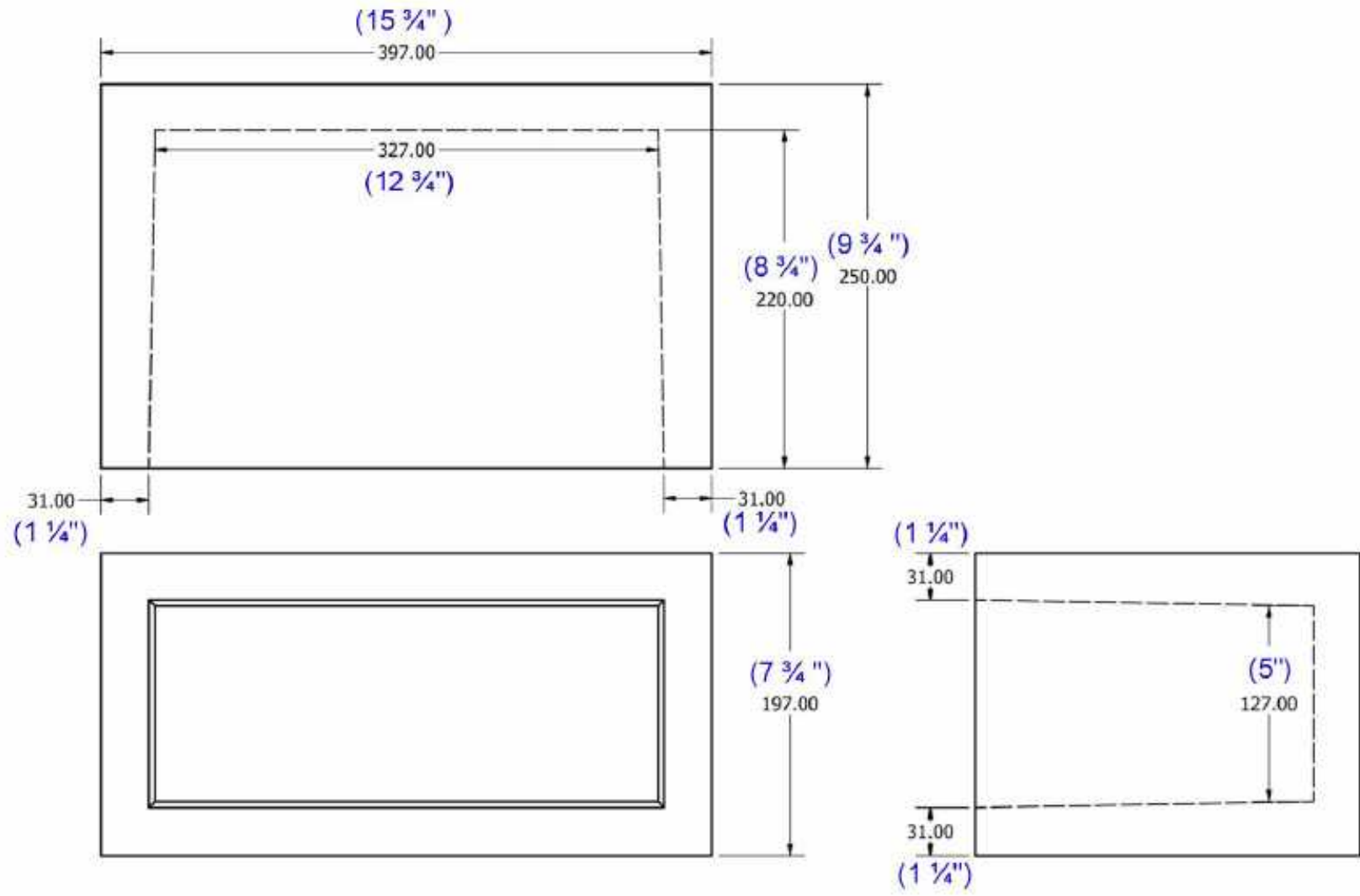
Cremated Remains Interment Niche System



Each niche can contain two caskets as shown.



The intellectual property contained within this document belongs to welters and is not deemed to be in the public domain



Copyright. welters organisation worldwide

welters organisation worldwide		
Drawn by: SW	Date: 17/08/07	Scale: --
Drawing no: WOW 131		Rev: A
Title: Single Niche Block		

All dimensions in mm

Desktop Housing Square

welters
ORGANISATION
WORLDWIDE

Example flower block and spinning

Desk type memorial housings around the Tree of Life centre feature for memorialisation only. Planters are installed in the corners. Images below show example of a similar configuration. Optional flower blocks with gold or silver flower spinnings can be provided at £15.75 each to be set behind the desktop housings.

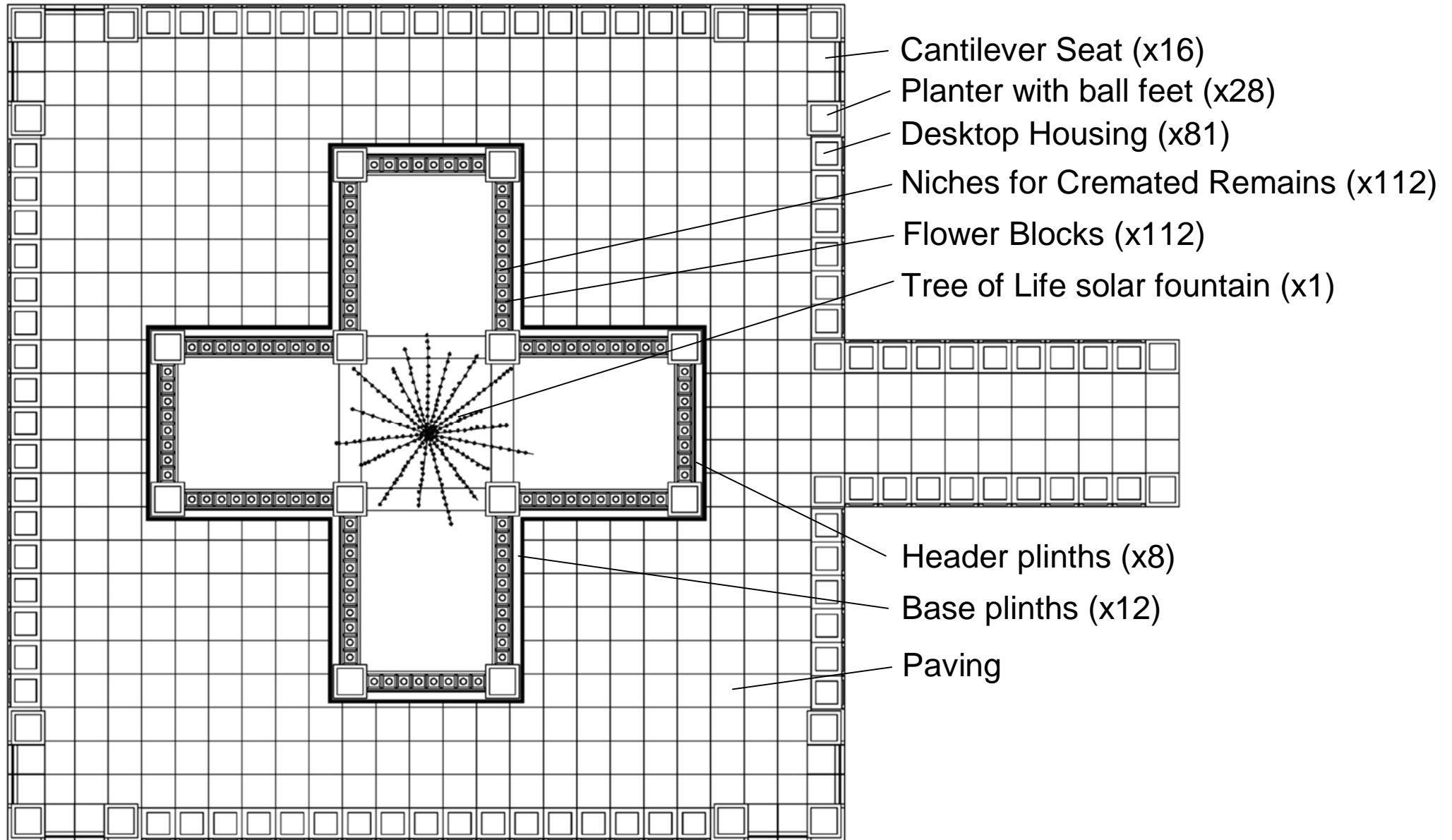


Decorative Stone Obelisque



Tree of Life Planter arrangement Plan

All cast stone architectural decorative components and paving will be in a buff/sandstone colour.



Tree of Life Planter Arrangement - Virtual Representation



Tree of Life Planter Arrangement - Virtual Representation



Tree of Life Planter Arrangement - Virtual Representation



Tree of Life Planter Arrangement - Virtual Representation



Tree of Life Planter Arrangement - Virtual Representation

