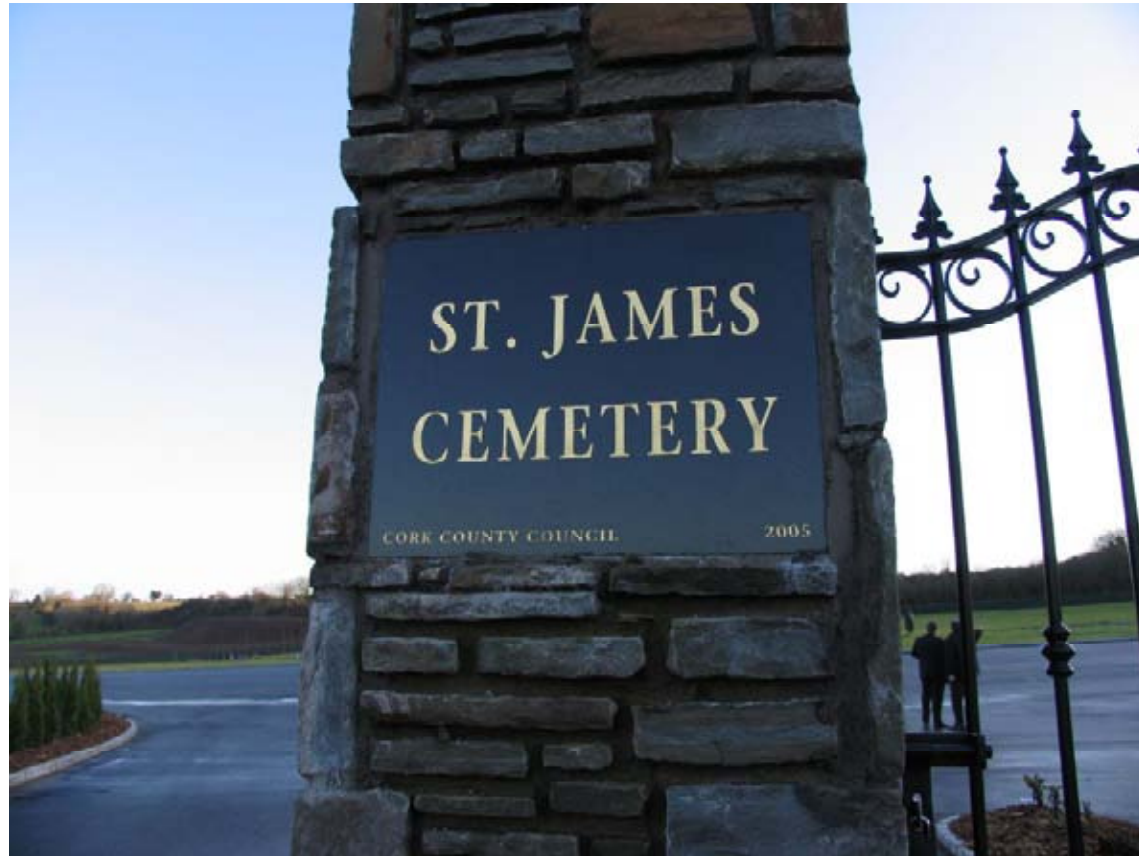


# INSPIRED TECHNOLOGIES

---

## Creative Design & Development



Cork County Council  
Niche Wall System

# facilities management

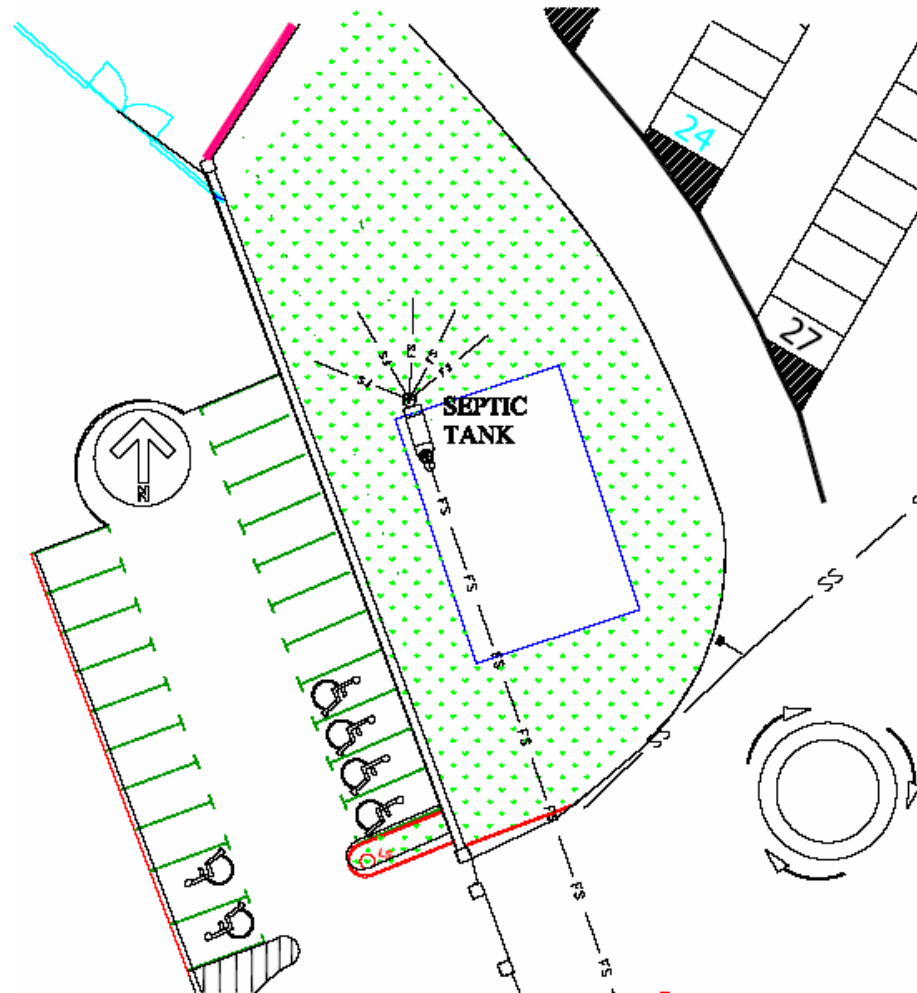
---

© welters organisation worldwide  
PO Box 159, Carlisle, Great Britain,  
CA2 5BG



# Cork Proposal

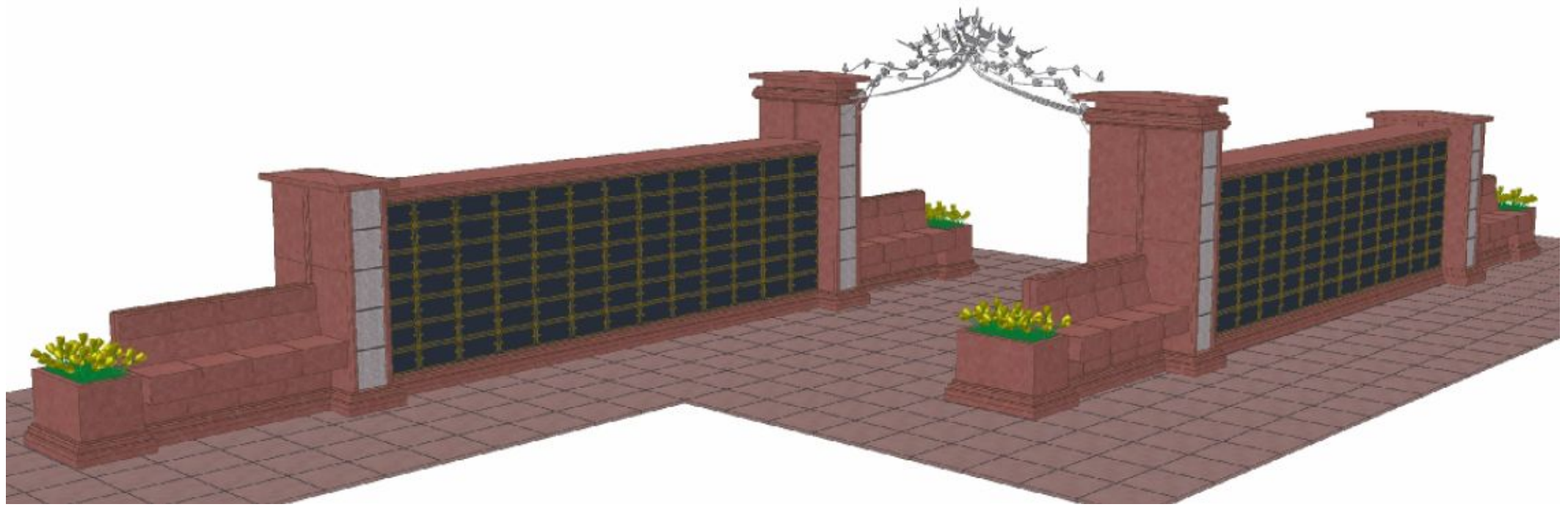
Note: Designs and descriptions are for discussion purposes – this is not a contractual document.



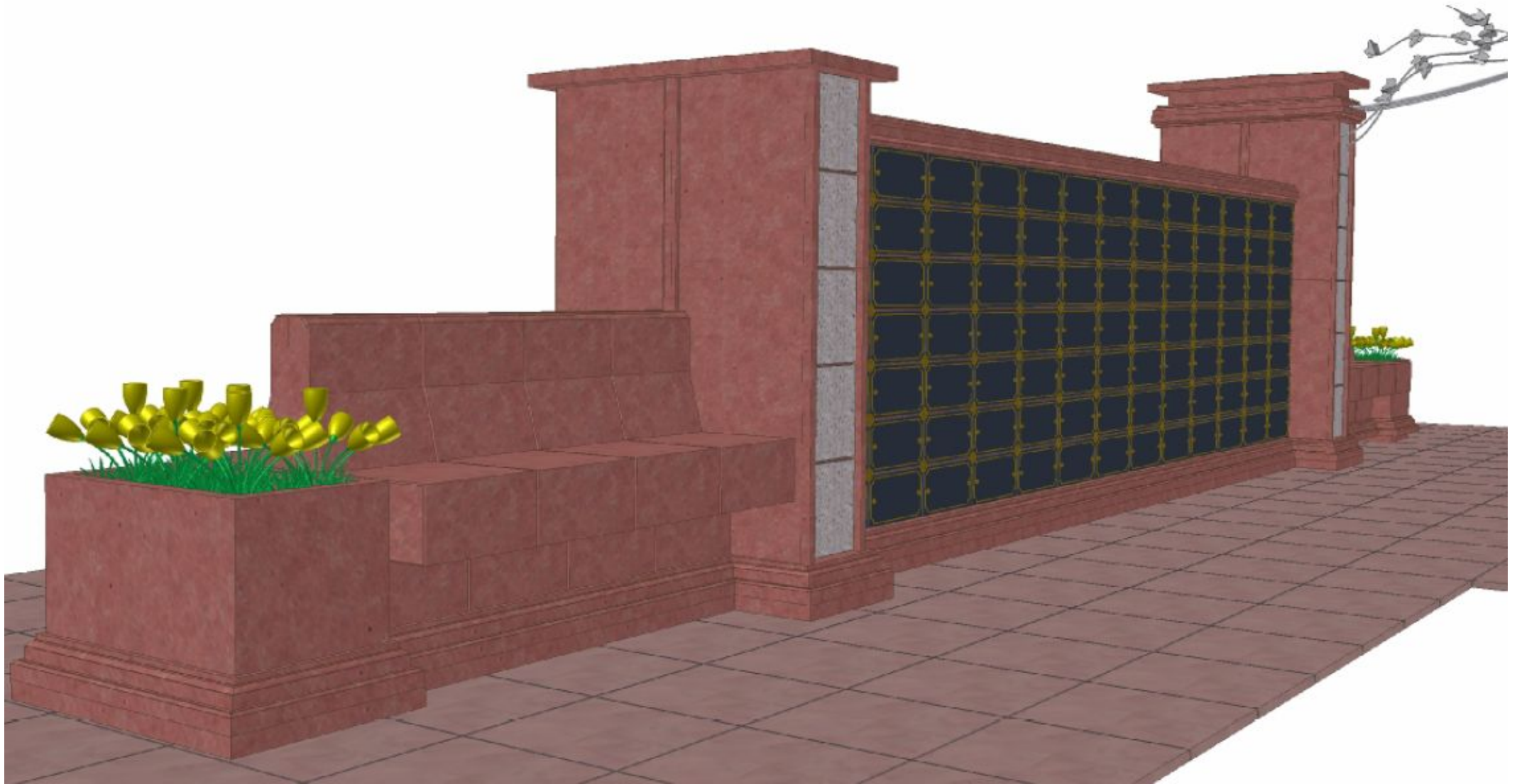


**welters** propose to develop within the existing site at St James Cemetery, Chetwynd as shown below.











Each **column assembly** is constructed using welters double depth niches. Larger and more traditional caskets can be used.

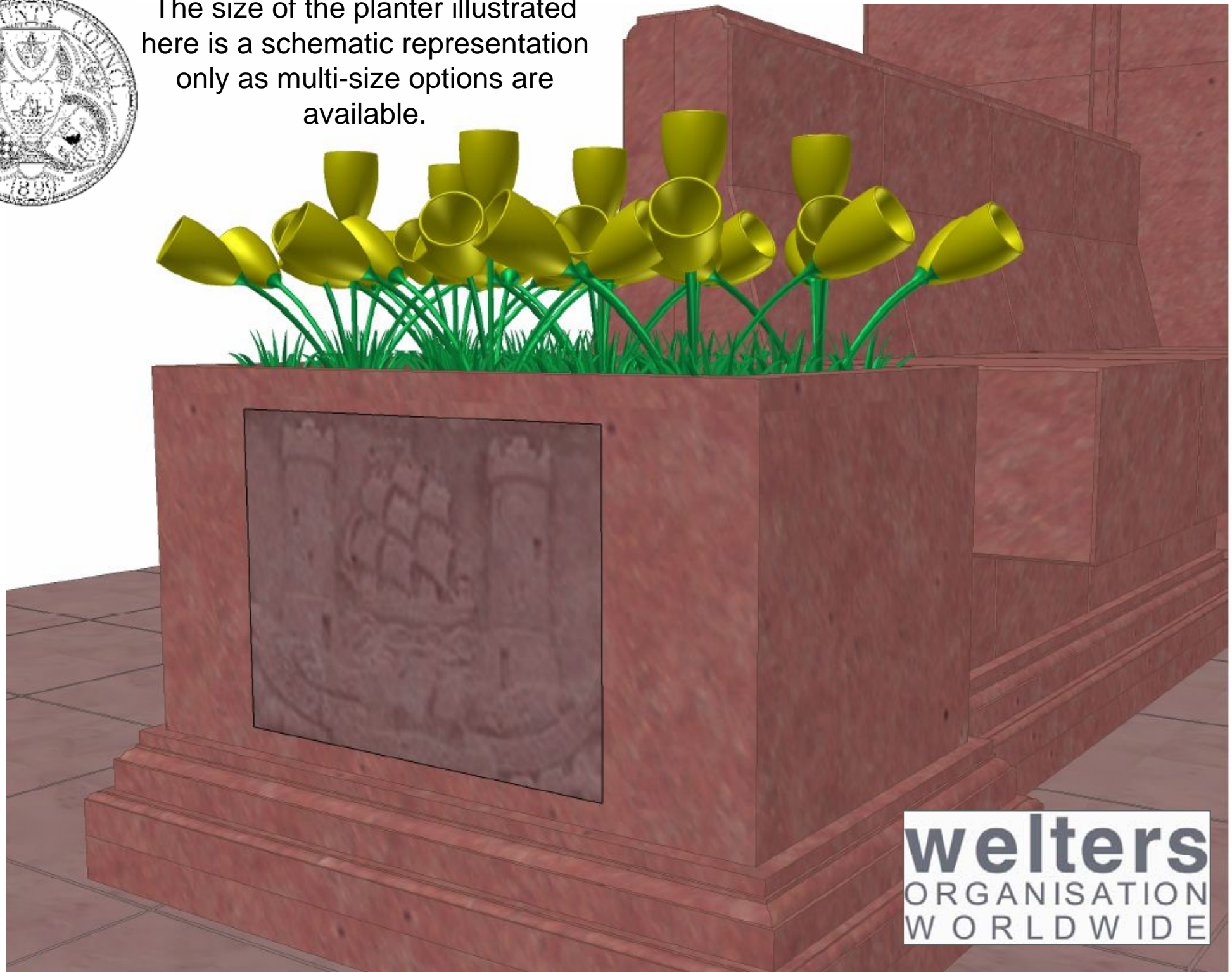
Bespoke compact caskets in space saving side by side format are used in the **wall assembly**.

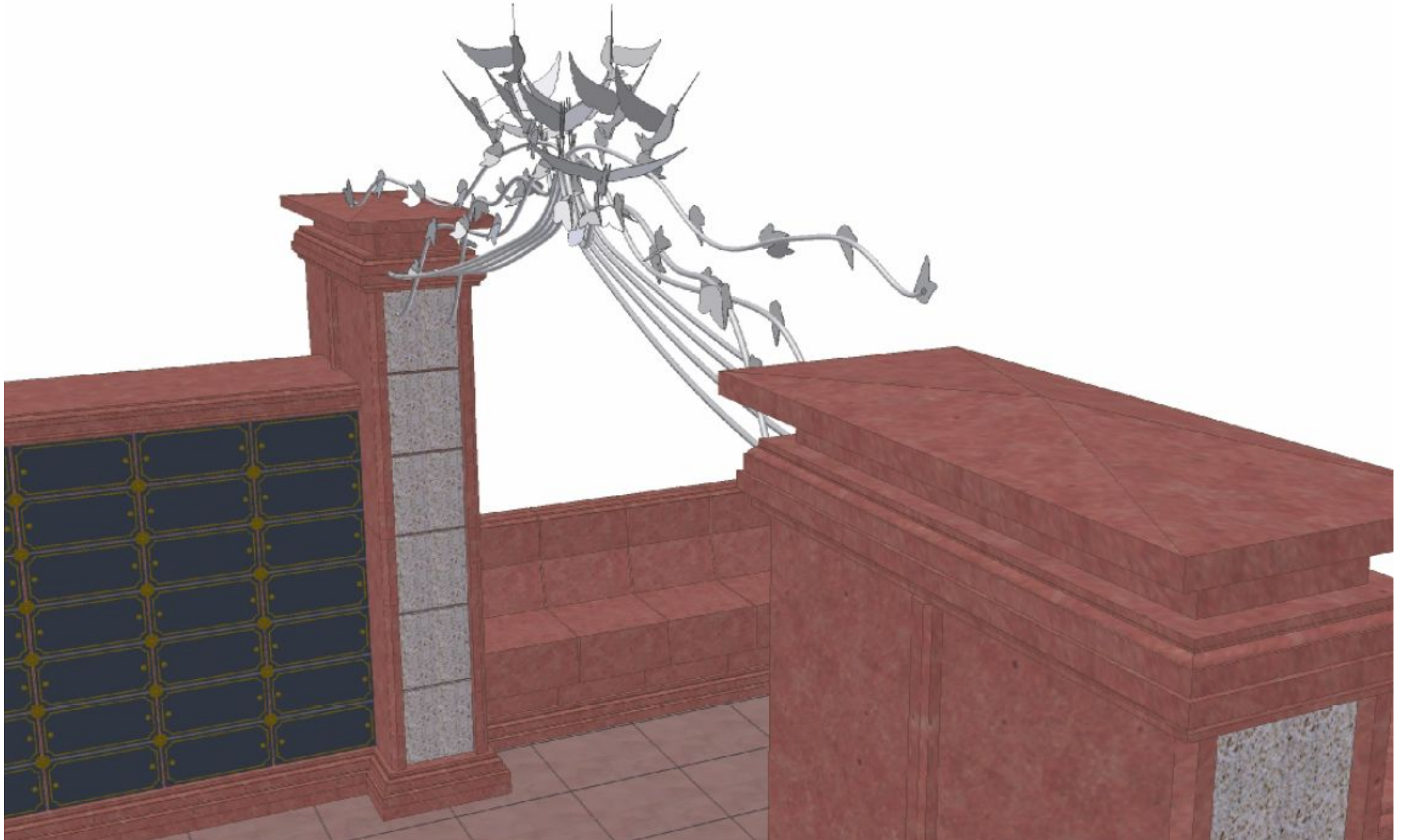


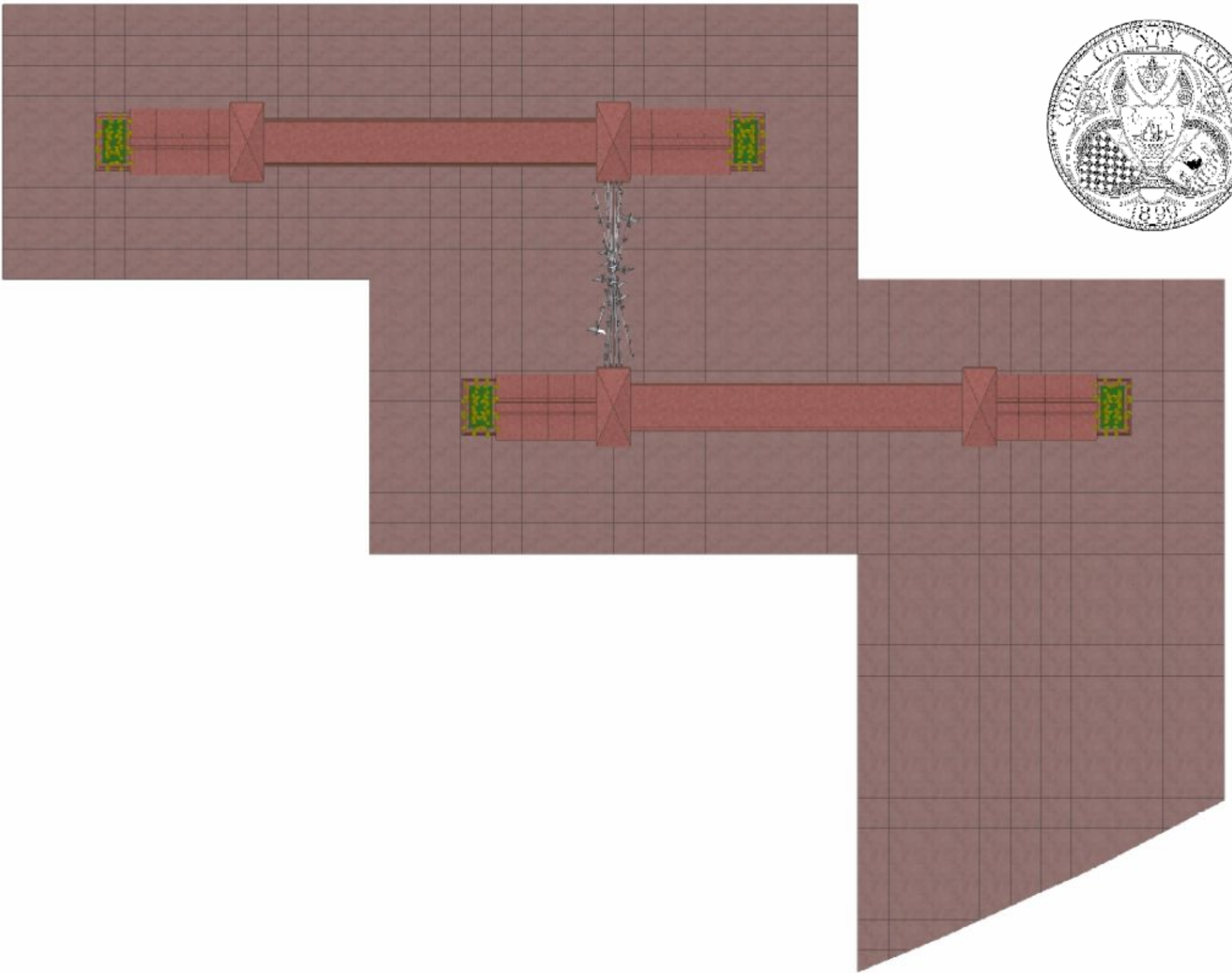
**welters**  
ORGANISATION  
WORLDWIDE

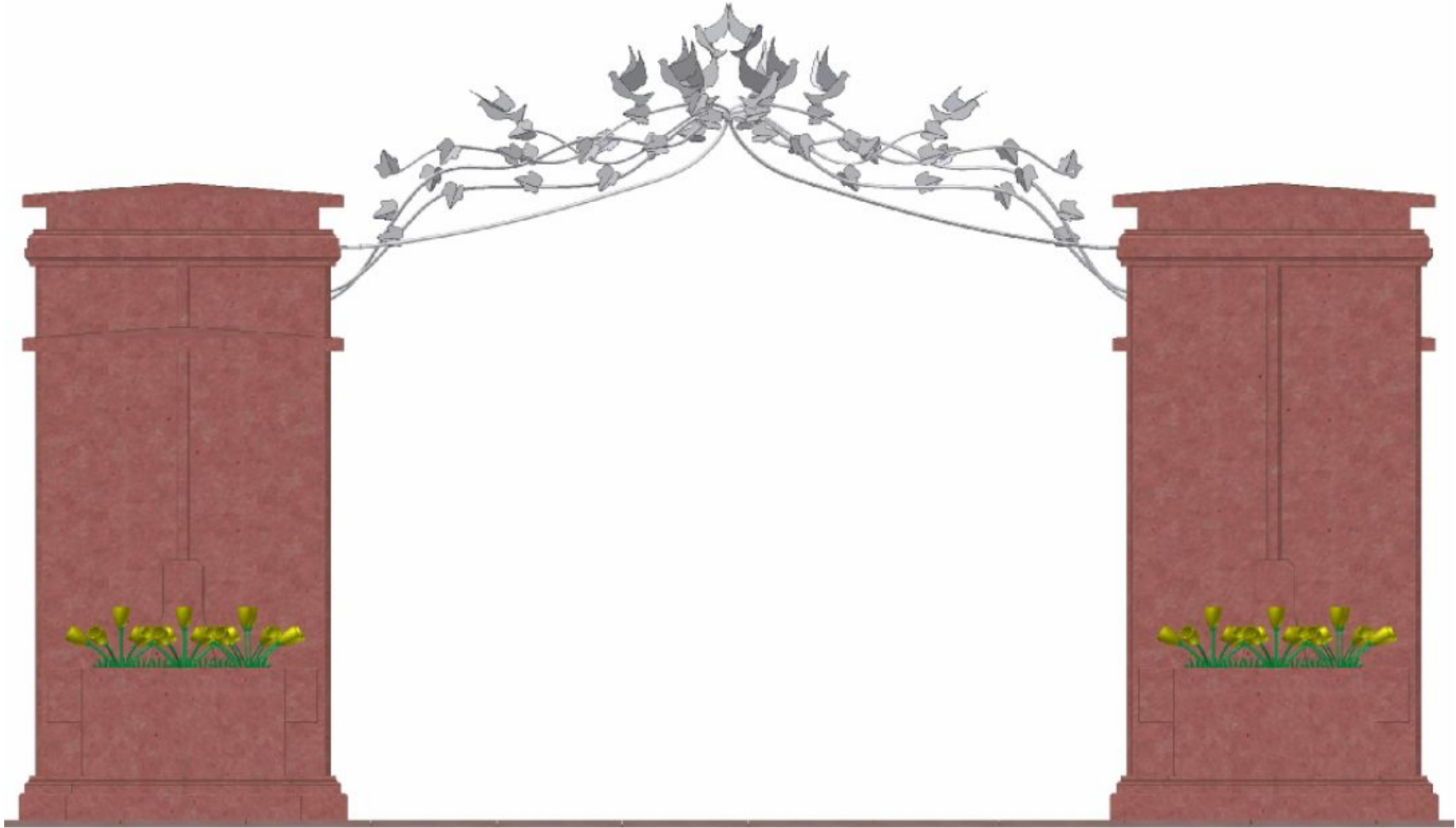
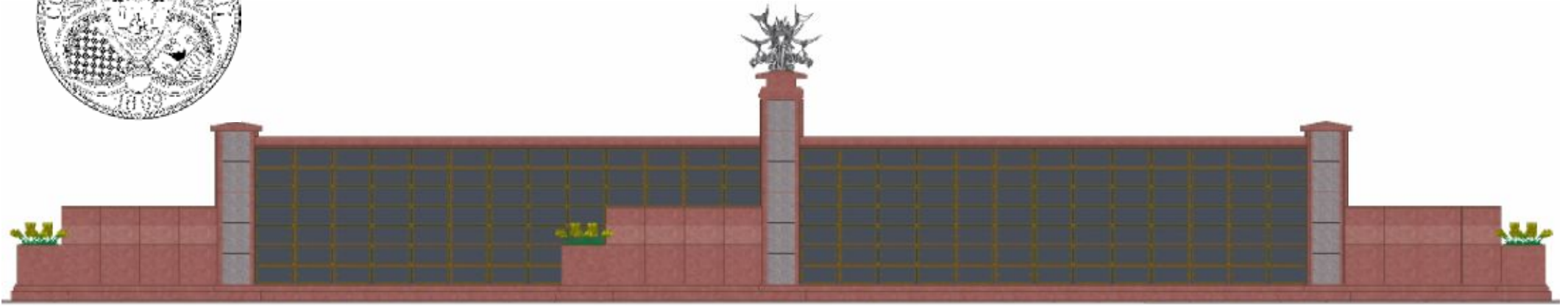


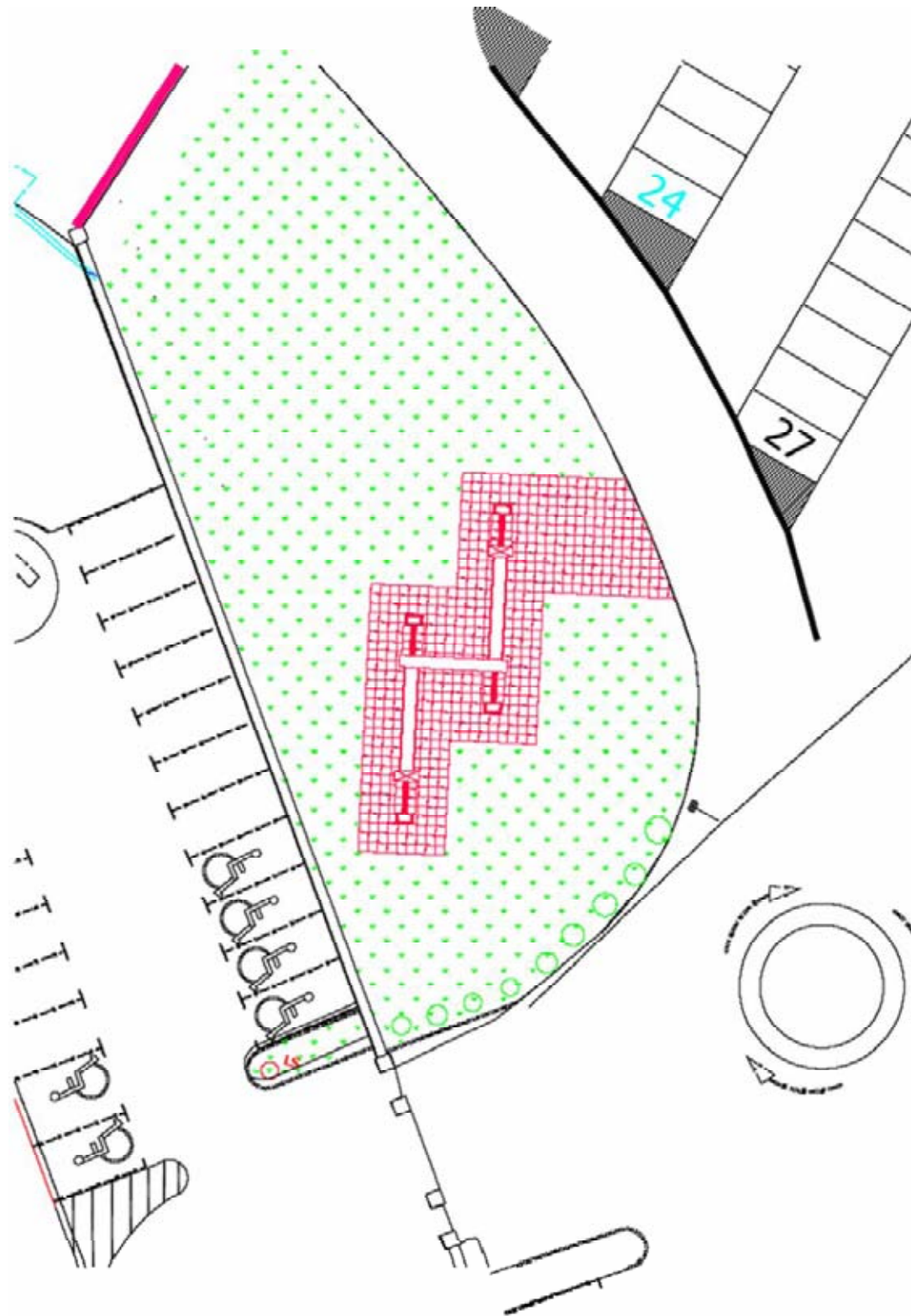
The size of the planter illustrated here is a schematic representation only as multi-size options are available.



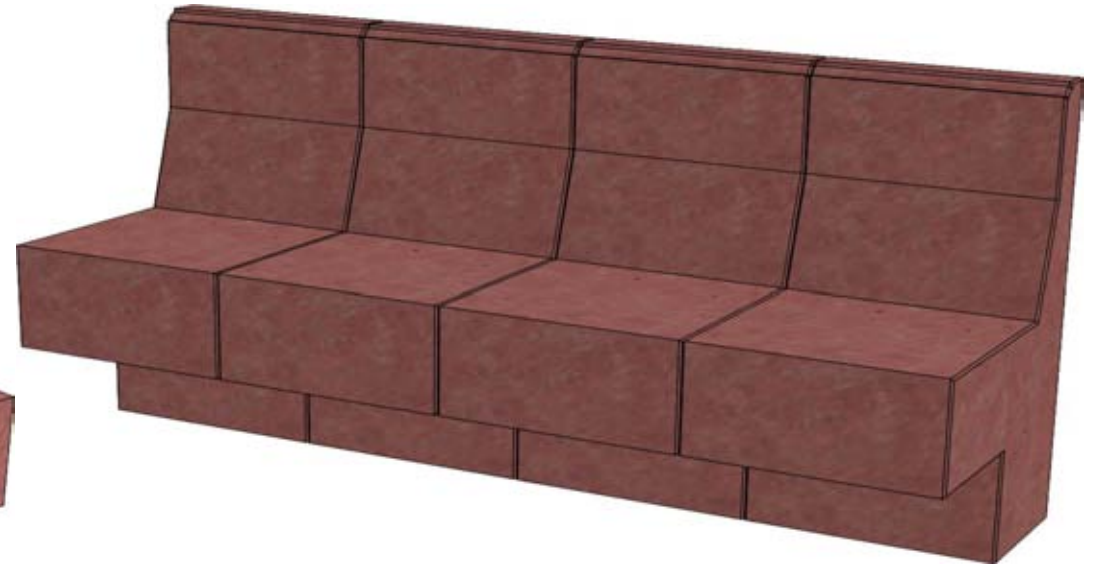
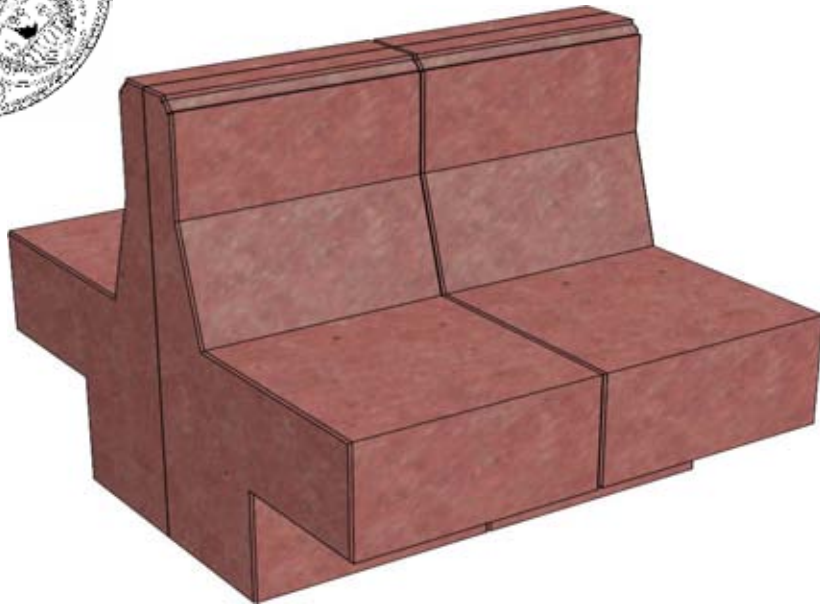




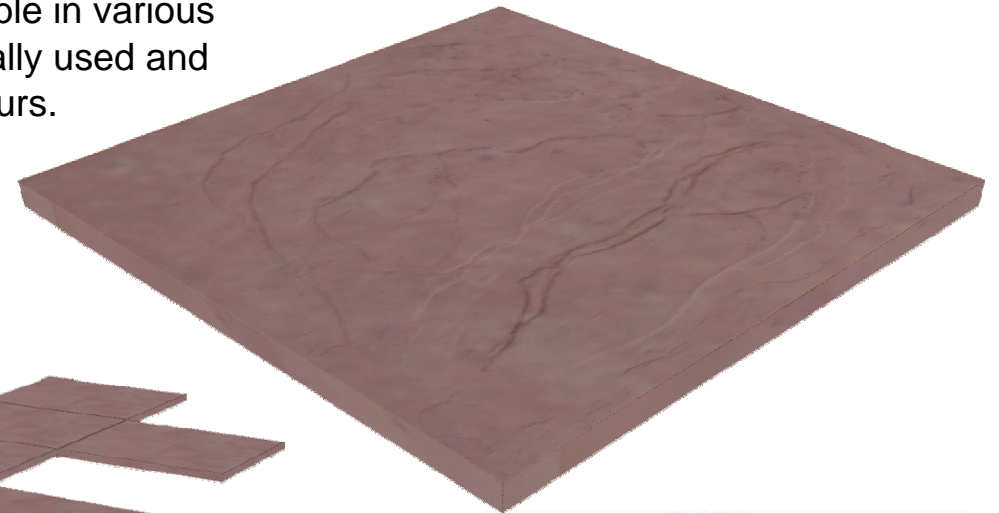
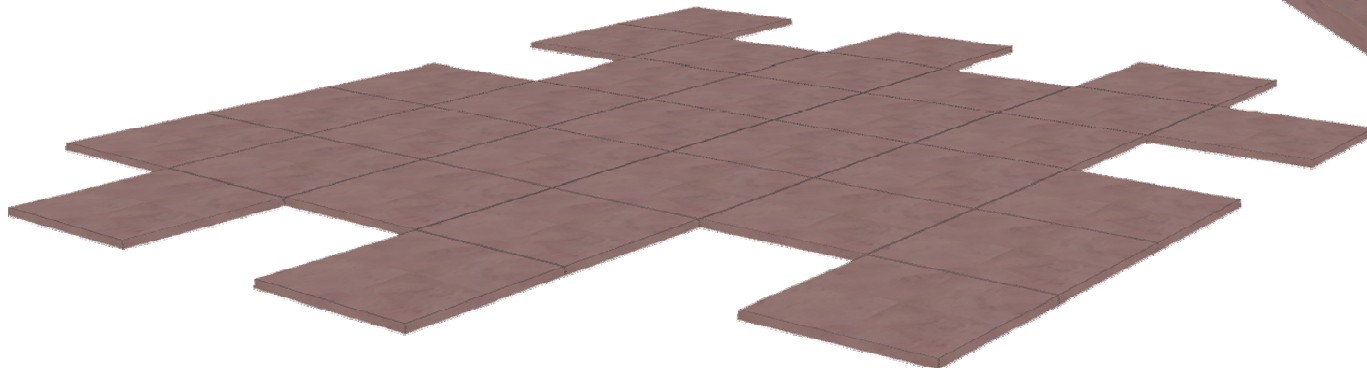




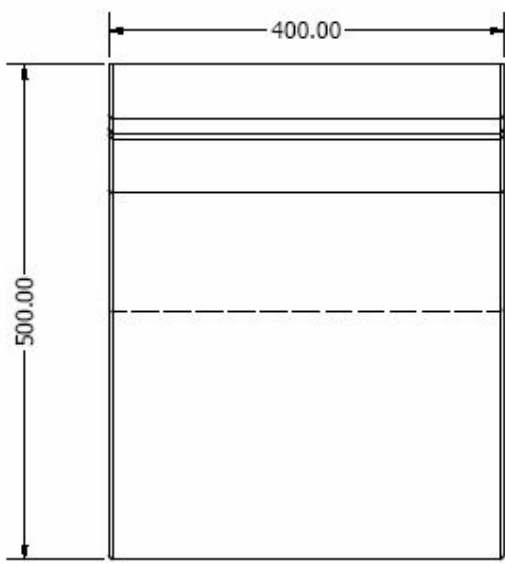
# Site Plan



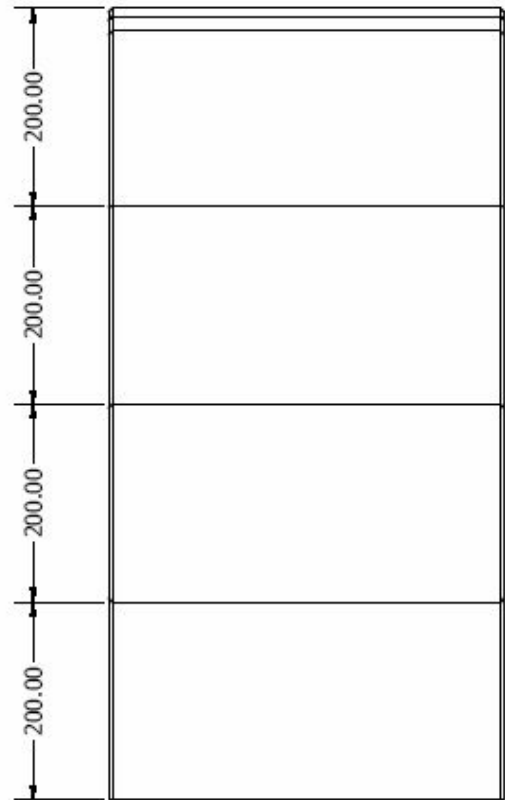
**welters** Connexions seating system is available in various configurations as single rows or back to back and is normally used and complimented by **welters** riven pavours.



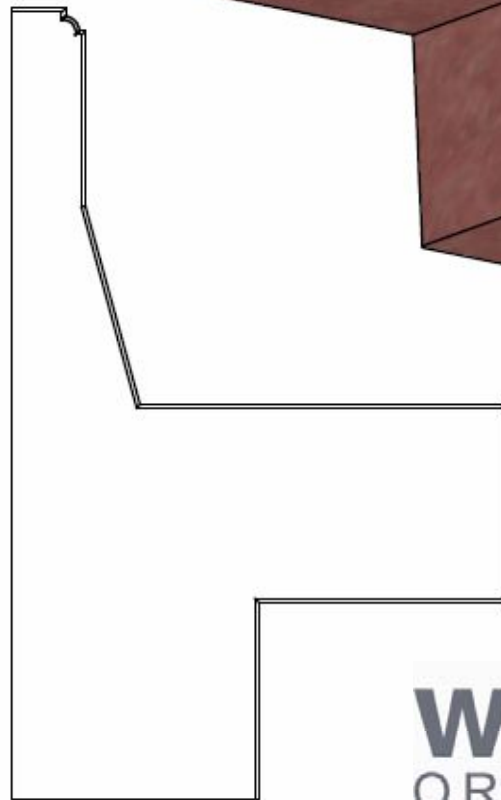
**welters**  
ORGANISATION  
WORLDWIDE



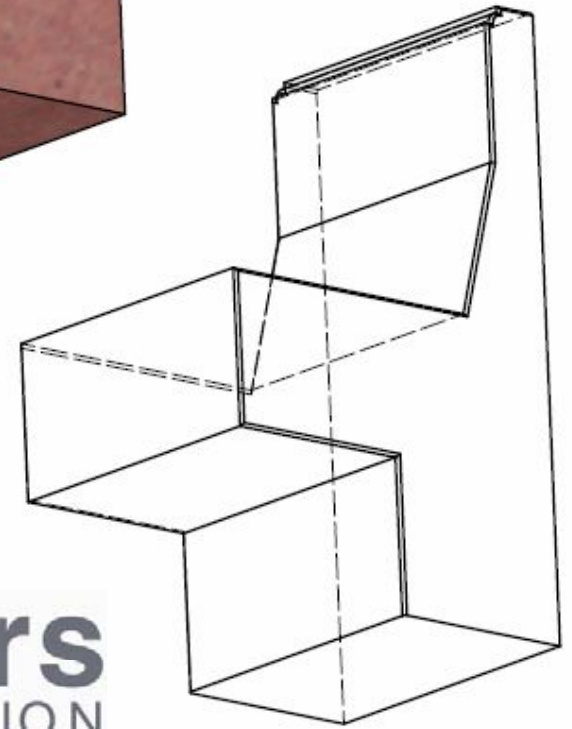
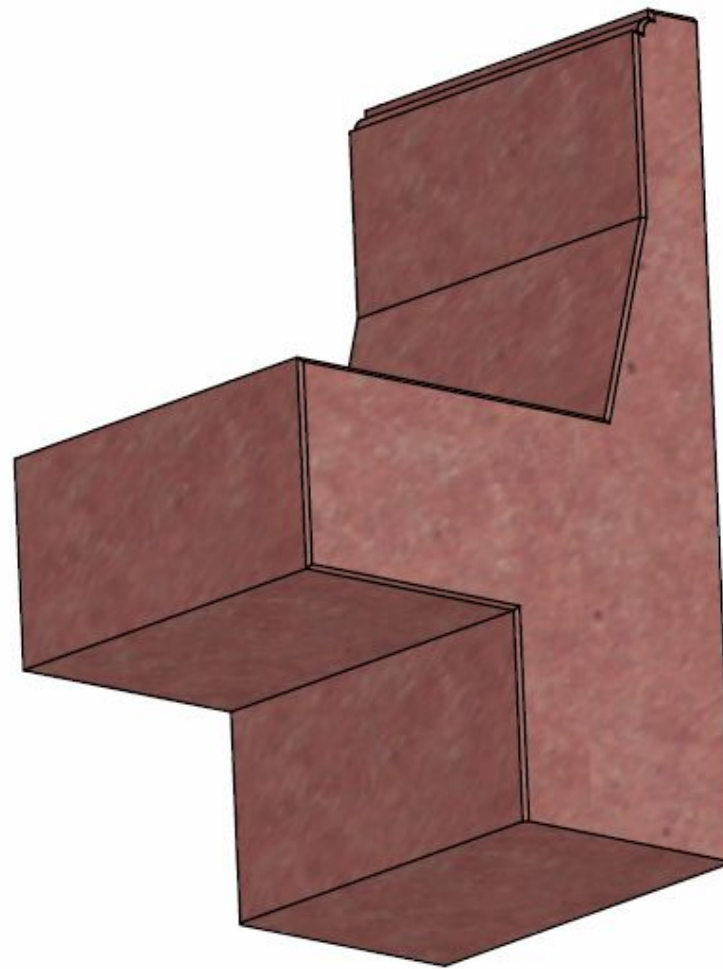
PLAN



FRONT ELEVATION



SIDE ELEVATION



**welters**  
ORGANISATION  
WORLDWIDE

# welters Connexions Seating System.

Examples shown of small configurations in Portland and York stone finish.



Stone colour available to client specification or to match adjoining masonry products.



**welters**  
ORGANISATION  
WORLDWIDE

DESIGN AND MANAGEMENT CONSULTANTS  
RESEARCH, DEVELOPMENT AND  
MANUFACTURING

PO Box 159, Carlisle, Great Britain, CA2 5BG  
Admin Tel: 08702 416422 (standard national rate)  
Fax: 01228 674959

Website: [www.welters-worldwide.com](http://www.welters-worldwide.com)

Email: [sales@welters-worldwide.com](mailto:sales@welters-worldwide.com)

