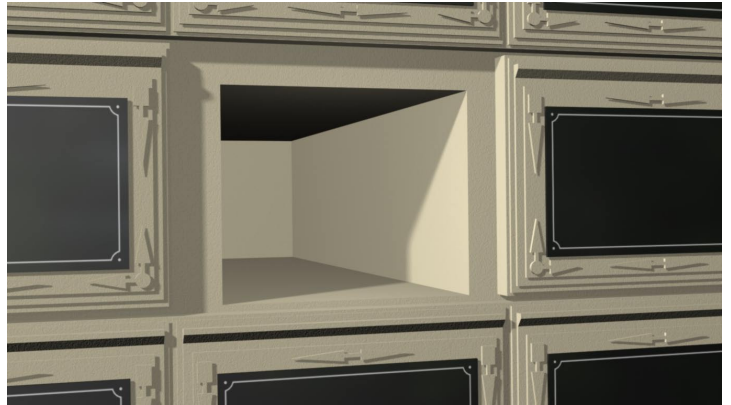


Interment sequence for welters Decorative Stone Mausoleum

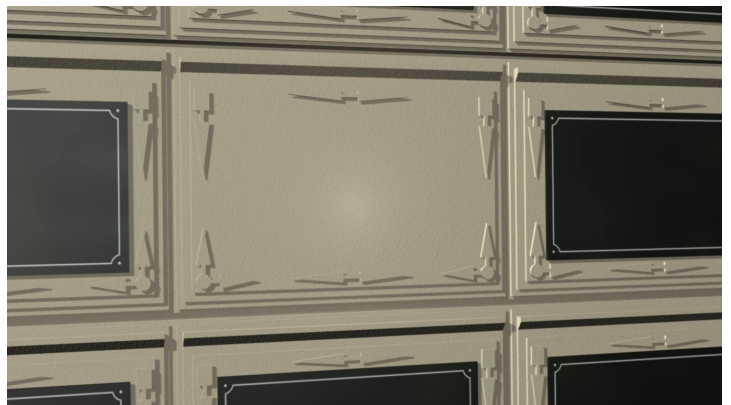
The interment module is prepared prior to the funeral. The disassembled parts are stored safely to the side at a safe working height.



The coffin or casket will be placed into the interment module. An interment roller should be used and a mausoleum tray is available if required.



After the interment is carried out, an ample amount of general purpose silicon is applied to all contact points on the rear of the decorative stone panel creating a continuous bead and affecting a good seal. The stone panel is then securely screw fixed into position.



The pre-inscribed plaque is fixed in place with decorative screw fixings

